



Avant
ENJOY SPORTS

SINCERITY

PRAGMATIC

EFFICIENCY

INNOVATION



AVANT'S EVENTS

- 2015 Rio de Janeiro Olympic Games
- 2014 The 44th American Myanmar Formula E
- 2013 The 27th SEA Games Myanmar
- 2012 Omen Beach Handball WC
- 2011 Universiade Shen Zhen
- 2010 China Shang Hai EXPO
- Guang Zhou Asian Games
- 2008 Bei Jing Olympic Games

Avant Seating

AVANT SPORTS INDUSTRIAL CO., LTD.

Avant Industry Building, Zhoushi Road,
BaoAn District, Shenzhen, China
Tel: +86-755-28490888
Fax: +86-755-29688489
Web: www.avantbleacher.com
E-mail: market@avant.com.cn

Avant 领先®

www.avantbleacher.com

SUNDON BLEACHER

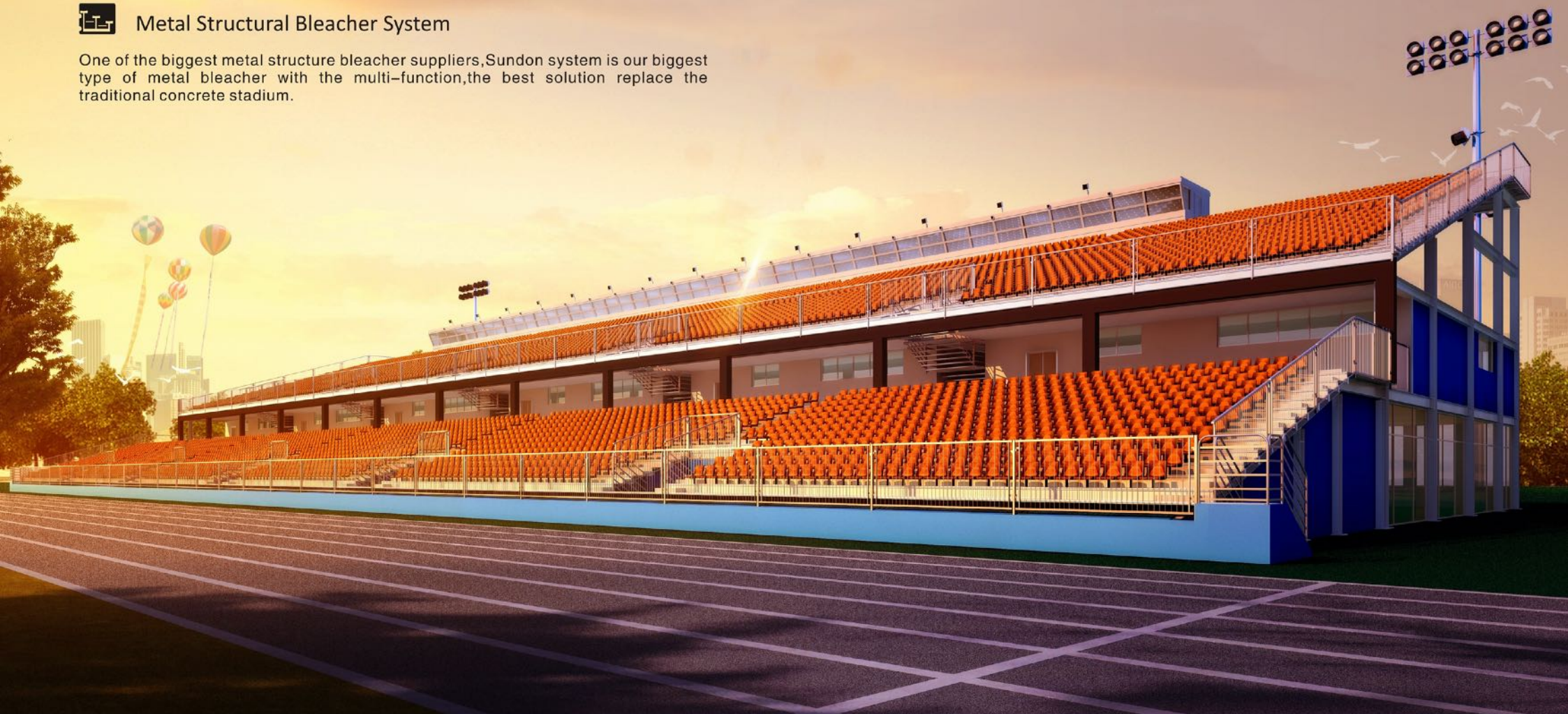
Avant Metal Structural Bleacher System





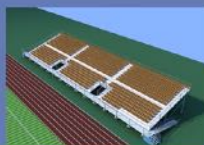
Metal Structural Bleacher System

One of the biggest metal structure bleacher suppliers, Sundon system is our biggest type of metal bleacher with the multi-function, the best solution replace the traditional concrete stadium.





Metal Structural Bleacher System



Vertical View

The single layer with the disabled access

Single layer is the normal structure for Sundon system, all of the seat will be used, the cost is lower than the double layers.



Metal Structural Bleacher System



Inner picture of the top big control room



Inner Picture of the Top Little Control Room



Different Type of the Top Control Room



the control rom can be customized



Metal Structural Bleacher System



The biggest supplier in China for metal structure bleacher, the leader in this area.
The material of the tent are PVC and PTEF

With the tent, the spectator will be very happy because it prevents the sunshine and rain.
The structure of the roof is made by steel, and the tent is membrane material



Metal Structural Bleacher System



Leisure room



Gym



Change clothes room



Dining room



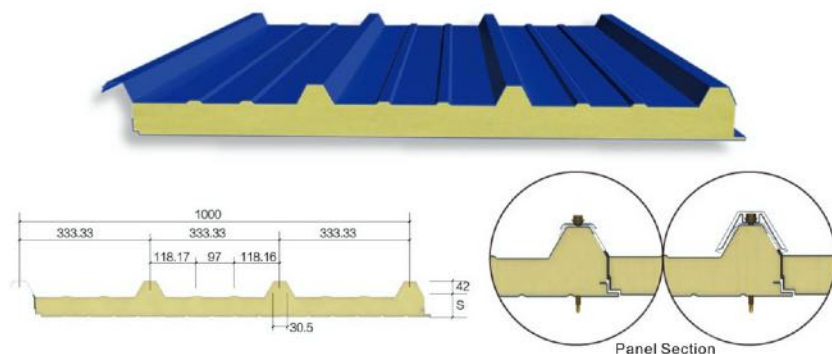
Health care room



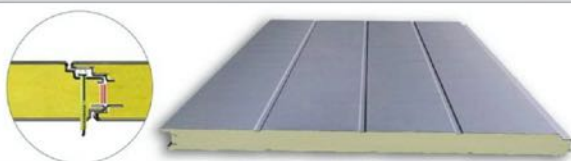
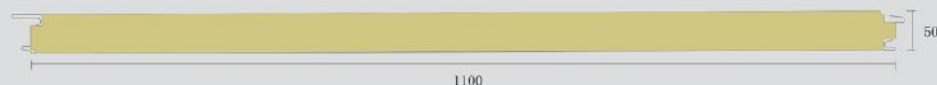
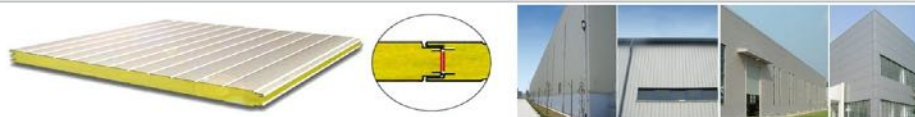
Supermarket



Roof Panel



Wall Panel



Glass Wool Panels

Glass Wool: glass wool is a kind of glass fiber, which is manmade inorganic fiber. Through fibrosis of the molten glass to become cotton-like material. In chemical composition, it is a kind of glass. The molding is good, bulk density and thermal conductivity are low, heat insulation and sound insulation are excellent, corrosion resistance and chemical performance are stable.

Rock Wool Panels

Rock Wool: rock wool is a kind of mineral wool, which is fluffy, short and thin fibers, made of natural rocks and minerals and other raw materials. Rock wool is inorganic fiber whose main raw material are natural rocks such as basalt, gabbro, dolomite, iron ore, bauxite, melting and fibrosis in high temperature.

PU Panels

PU: PU is short for polyurethane, which is also called Urethane rubber or spring rubber. The full name is poly-urethane or isocyanate polymer. Polyurethane is elastomer between plastic and rubber with a unique combination of their excellent performances. Characteristics: anti-abrasion, anti-chemical corrosion, strong tension, high elasticity, high press resistance, stable, anti-tearing, anti-radiation, good strength, excellent load bearing and reducing shock on surface, as well as wide range of hardness.

EPS Panels

EPS: EPS(polystyrene)is also called foam board. EPS board is white in color. It is advance thermoformed, then heated and molded with a volatile liquid blowing agent containing polystyrene beads. It has a fine closed cell structure and is mainly used in wall, roof, composite board, the insulation of cold storage, air conditioning, vessels, underfloor heating, decorating carving.

the understructure drawing of the fuction rooms



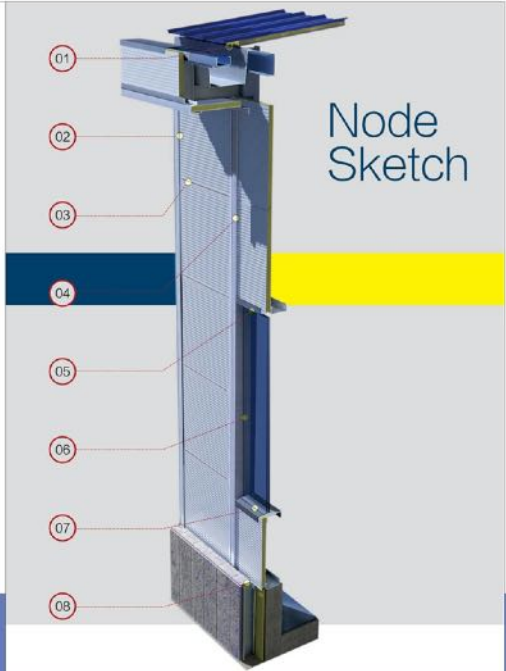
The lightgag steel joist is Hot dip galvanized steel strip with cold rolling technology synthesis, it is factory prefabrication and field assembly,that make the production and installation very fast.



configuration table

roof	waterproof	gas-permeable membrane、asphalt felt
	insulating layer	EPS sandwich board、PU sandwich board
	purline	Cold bending rectangular tube、cold-formed C type steel
Wall body	roof truss	Cold bending rectangular tube、Pipe truss
	ornament、PVC	PVC clevis、PU metal clevis、calcium silicate board、contour plate
	insulating layer	EPS sandwich board、PU sandwich board
	ring beam	Cold bending rectangular tube
Floor	steel column	Cold bending rectangular tube
		alcium silicate board、contour plate Pressure steel composite floor slab、SP LouCheng prestressed slab
Window and door		EPS Sandwich door、metal Sandwich door、plastic window

- 1.Cullis node
- 2.Wall corner-Corner plate
- 3.岩棉夹芯板接缝
- 4.the joint of rock wool Sandwich board
- 5.node on the window
- 6.node on the side edge of the window of
- 7.node under the window
- 8.wall node



SUNDON

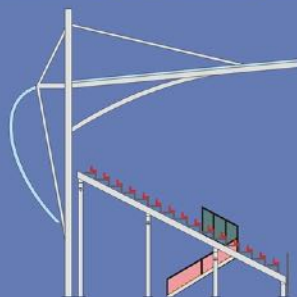
BLEACHER

Singal layer sundon bleacher system
Grandstand for sports center

Professional, Safe, Smart, Fast, Durable, Environmental, Beautiful



Metal Structural Bleacher System



Metal Structure bleacher is environmental and circulatory, it can be with function room, control room, roof, and it really a good choice to replace the concrete grandstand.

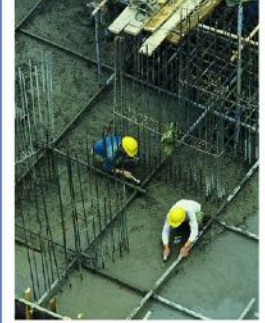




About the concrete grandstand, it take a lot for design and building, and long installation time, the site is dirty and bad pollution, high cost for maintenance and unrecyclable.



The material of the metal structure is recyclable, almost no waste, and low cost for removal. For concrete grandstand, we have to bomb it for removal.



About the concrete grandstand, the site is wet construction and a lot of construction waste.

THE CREATION OF VALUE

Professional, Safe, Smart, Fast, Durable, Environmental, Beautiful

Right now, 60% sports field is using the metal structure bleachers, the concrete grandstand will be replaced in the future.



Avant Sports metal structure bleacher system uses high quality prefabrication metal material, assembled in the site, it is the best choice to replace the concrete grandstand.

When dynamic load or uneven load occurs, within a certain amount of stress amplitude is almost completely elastic, will not suddenly fracture damage because of accidental overload or partial overload resistance to shock.



Prefabrication metal material, assembled in the site, low cost for foundation.



The metal structure bleacher is light and modern, ventilative, nice looking, also can be with function under the structure just like the concrete grandstand.



Fast installation, and the site is dry construction, lower noise, less construction waste, and less damage for the environment.



Sundon bleacher system

To provide you with a complete solution to the stadium project

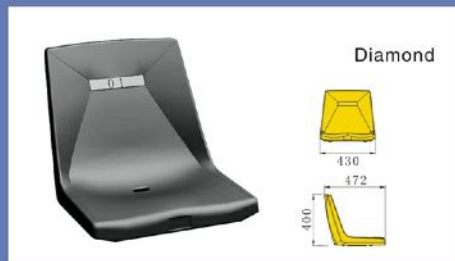
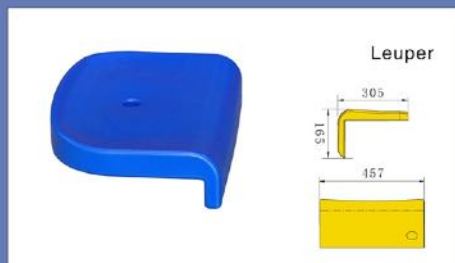
Avant Sports Sundon metal structure bleacher system can provide the excellent seating solution for your stadium and field.

Accessories Optional table

Accessory	option 1	option 2	option 3	option 4	option 5	option 6
Deck	Hot dip galvanized pedal	aluminum deck	●	●	●	●
Channel	Escape Route from first row	Escape Route from Middle	●	●	●	●
Armrest	Armrest of the middle Channel	●	●	●	●	●
Roof	membrane structure	●	●	●	●	●
Up stair	up stairs from first row	up stairs from the bottom	Barrier upstairs for disabled	●	●	●
Control room	small control room	middle control room	big control room	●	●	●
First row fence material	Hot galvanized steel network	Treated wooden board	●	●	●	●
Seats	aluminum bench	lepal seats	coolin	sailin	diamond	merit
Multi-function room	gym	press conference hall	medical massage room	VIP room	meeting room	toilets

“ ● ” No other choice

Seat selection



Rich and unique color scheme Seat selection and its application

According to the site environment request, offers the variety of color options,base on the advanced color collocation design procedures, we can support client the stands color design text, logo,etc....

Seat color range

Recommended Colors(7Colors):



Optional Colors(10Colors):



Client Appointed Colors:



Color matching, graphic design program



Design with (intermingled color, uniform color palette color, ribbon color) color scheme pattern, lettering and logo and other.



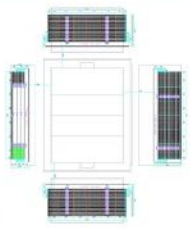
Sundon bleacher system

To provide you with a complete solution to the stadium project



Avant Spots Sundon System provide excellent seating solution the stadiums and fields

Based on many years' professional experience on sports facility production and installation, we Avant are always on hand to provide perfect and professional seating solution for different. We also have the installation team for you for the installation and maintenance.



Professional stadium bleacher manufacturer

Our company is located on the most developed economy city of the south of China-Shenzhen, where is adjacent to Hong Kong, and only 1 hour by car to the biggest Port of China, the transportation is very convenient.

Our factory covers 40 thousands m², as one of the biggest manufacturer in China, we have the Automatic robot welding system, Large and medium-sized blow molding machine, Aluminum alloy die casting machine, Metal powder production line, and related professional production facility. In order to ensure the quality is better, we follow the standards of ISO9001 and ISO14001 for purchasing raw material, production and loading.

The careful service

The seating solution will be made according to the sites and the solution is meet the requirements of the site.

We also have the well trained engineer team to support the installation and maintenance, besides, we also provide the service of periodic inspection to solve the problems during the using.



Service to Global



We are ready to serve against your call.

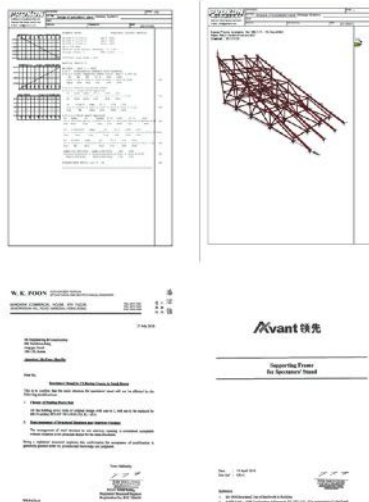
Avant Sports Qualifications . Certifications



MUSCAT 2013
2nd ASIAN BEACH GAMES
Hot Oman and hot beach handball games

Metal structure bleacher system

Excellent projects



Our metal structure bleachers were tested by the Hongkong struture engineer who owns the International license, and our bleachers can meet the international standards.



our production meet the related top standards

- > Pass EN13200-5:2006 (CE test)
- > Pass BS5852:2006 (TUV test for anti-fire)
- > Pass SGS test for antifire and anti-UV
- > Pass the tests of Chinese furniture quality supervision and inspection center
- > Pass the tests of Chinese Sports facility supervision and inspection center
- > Pass Chinese fire extinguishing systems and fire-resistant components of quality supervision and inspection center

Design standard:

Chinese standard GB 50009-2001
Chinese standard GB 50017-2003
Chinese standard GB 50011-2001
Chinese standard JG 50011-2001



CE
EN 60439-1:1999+A1:2004
EN 6100-6-3:2007
EN 6100-6-1:2007
EN 6100-3-2:2005+A1:2008
EN 6100-3-3:2008



SGS
SGS认证



The Beach handball games started in Italy in 1992, it is very popular in Euro and America because it is Flamboyant, happy, health and fashion.
In September 2012, Oman, the hot county with sunshine, beach, seawave and date palm, which become the host of the world beach handball, 24 teams from 20 countries enjoyed the game.



Avant Sports's Sundon, the quantity is 66172 pcs

F1 KOREAN

the biggest metal structure grandstand
in Asian, for 2010 F1 Korea.



On the date of Oct 24th 2010, F1 Korea was end, Avant Sports supplied 66172 pcs seats with metal structure grandstands, these grandstands also will be used for the future games.

It took 3 month for us to design, produce and install all the grandstands, it is a beautiful view for the South Korea's motorsport track.



Metal structure bleacher system

